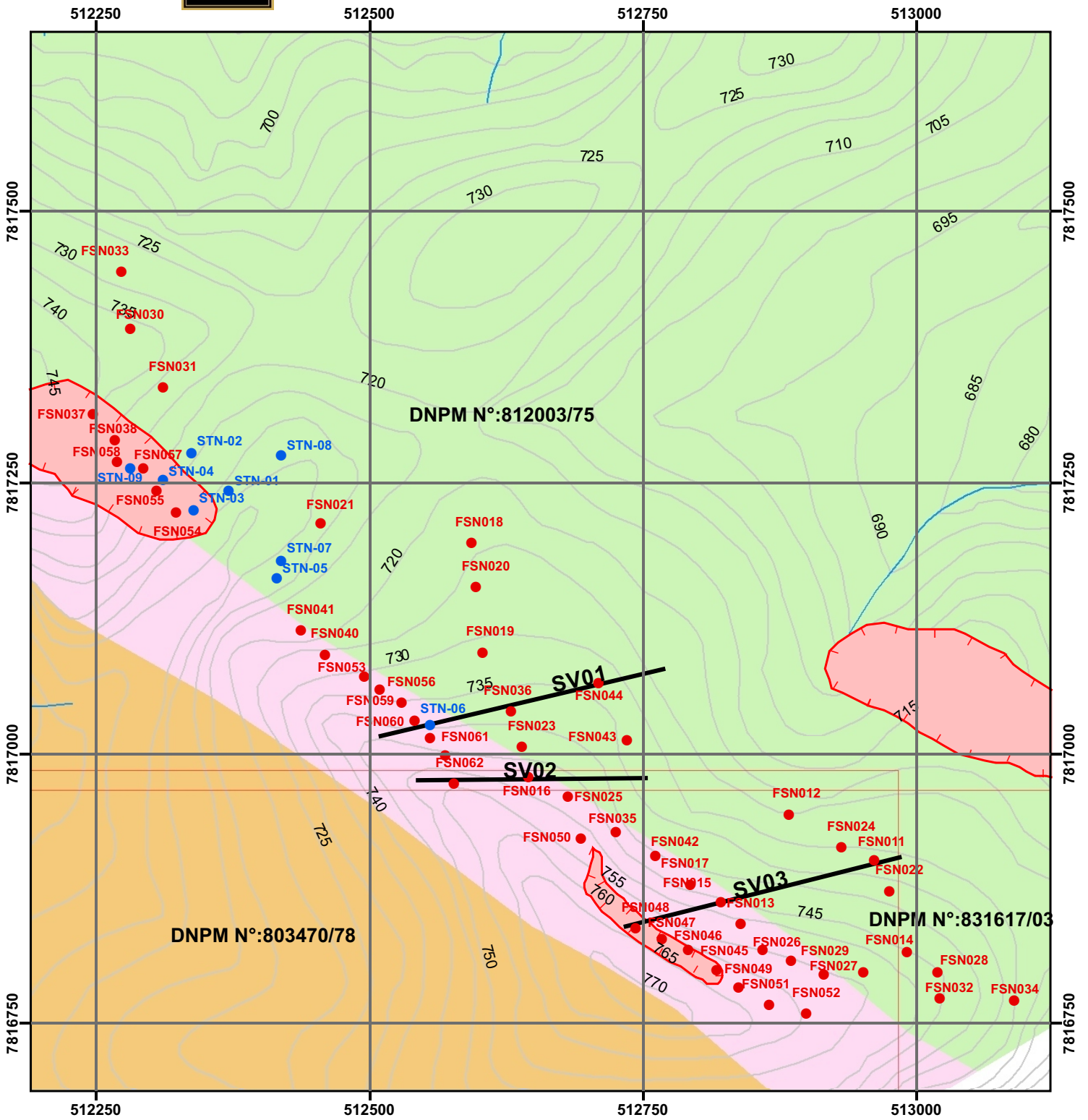


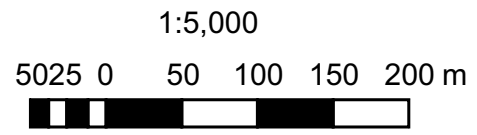


Turmalina Project Satinoco Target Drill Hole Map



Legend

● Drilling - Anglogold (STN)	● Drilling - Jaguar Phase 1 (FSN)	— Vertical Section	— Topography	▣ Cities	▭ Mineral Right	▭ Open Pits	▭ Rivers
				Geology			
				▭ Sedimentary Sequence	▭ Intermediate Volcanic Sequence	▭ Metasedimentary Sequence	▭ Basal Volcanic Sequence

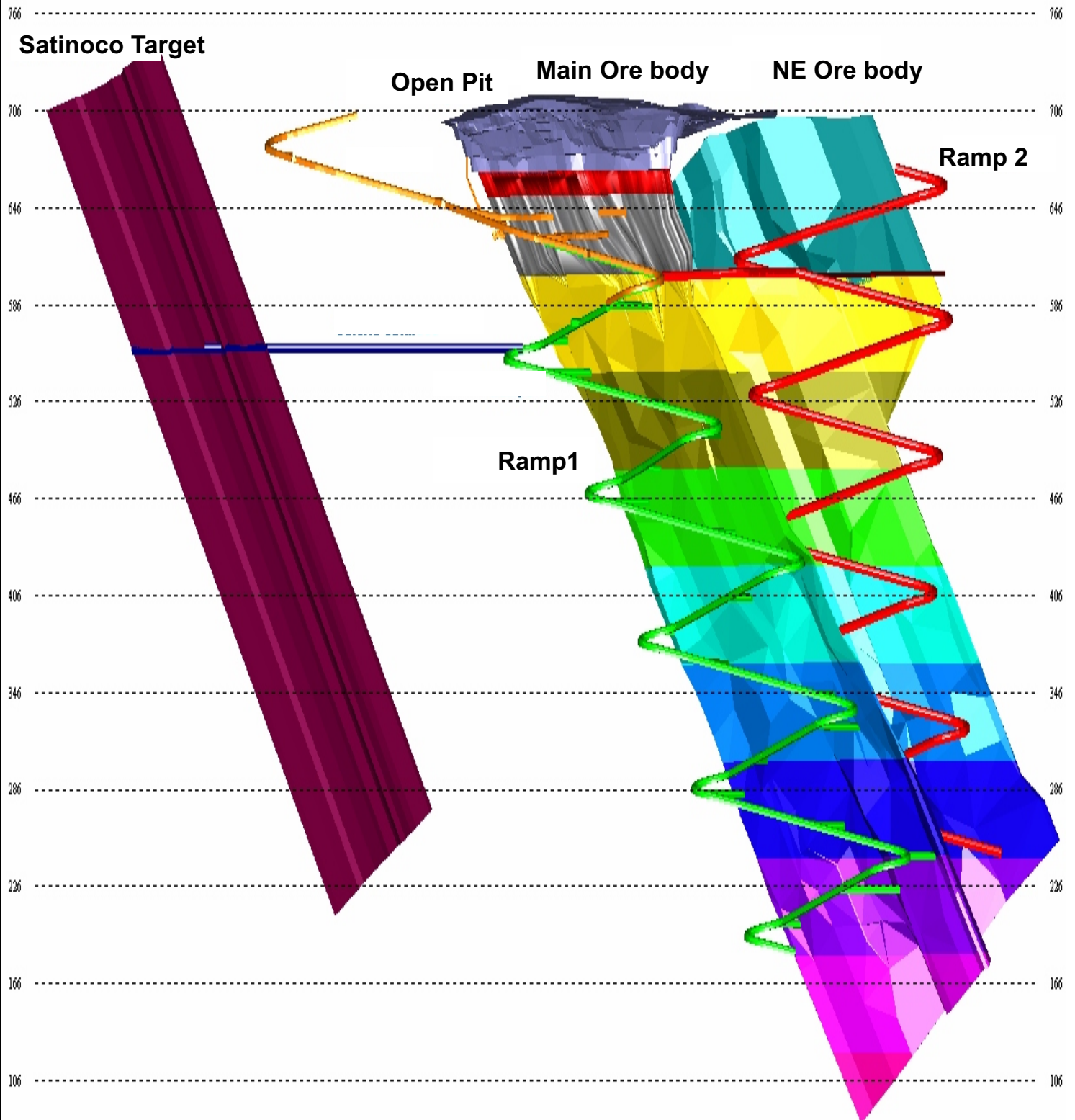


Satinoco Target - Drill Results

Hole	Coordinate		Elevation (m)	Width (m)	Azimuth Degree	Dip Degree	Grade (g/t)	Thick. (m)	Intervals		Drilled By
	N	E							From(m)	To(m)	
STN-01	7,817,244	512,369	695.0	154.83	Vertical	-90	1.60	0.44	35.02	35.46	Anglogold
							1.10	0.38	56.00	56.38	
							1.30	0.99	83.10	84.09	
							1.16	0.80	124.24	125.04	
STN-02	7,817,279	512,336	705.5	182.86	Vertical	-90	4.93	0.72	48.05	48.77	
							3.41	0.35	131.00	131.35	
							6.08	2.01	165.15	167.16	
							4.64	0.68	171.45	172.13	
STN-03	7,817,226	512,338	697.2	154.43	Vertical	-90	3.50	0.39	49.50	49.89	
							6.11	0.48	50.40	50.88	
							2.11	0.94	51.61	52.55	
							2.72	0.63	54.00	54.63	
STN-04	7,817,254	512,310	705.3	220.60	Vertical	-90	1.20	0.44	55.00	55.44	
							3.07	0.58	58.15	58.73	
							1.07	0.77	143.55	144.32	
							2.35	1.28	145.96	147.24	
STN-05	7,817,163	512,414	705.8	197.53	Vertical	-90	2.07	0.52	41.00	41.52	
							2.54	1.66	83.04	84.70	
							4.56	1.65	119.07	120.72	
							1.85	0.38	51.63	52.01	
STN-06	7,817,028	512,553	742.8	141.08	245	-70	24.76	2.91	56.05	58.96	
							3.00	0.97	70.12	71.09	
							1.55	0.38	110.04	110.42	
							2.05	0.57	18.49	19.06	
STN-07	7,817,180	512,417	703.5	160.00	Vertical	-90	2.29	0.61	78.05	78.66	
							4.17	0.90	61.96	62.86	
STN-08	7,817,276	512,418	700.5	203.13	Vertical	-90	1.20	0.56	103.50	104.06	
							1.18	0.93	183.02	183.95	
							12.32	5.96	88.50	94.46	
STN-09	7,817,264	512,280	712.0	109.08	Vertical	-90					
				1,523.54							

FSN-10	7,816,820	512,858	747.7	111.00	250	-50	1.33	1.70	52.50	54.20	Jaguar
							1.11	11.35	57.55	68.90	
FSN-11	7,816,902	512,960	726.9	261.15	250	-85	5.70	3.80	208.45	212.25	
							3.27	2.40	215.30	217.70	
FSN-12	7,816,944	512,882	716.8	200.00	250	-50	Not mineralized				
FSN-13	7,816,843	512,838	744.7	132.45	250	-50	2.50	1.65	75.35	77.00	
							3.40	3.10	80.40	83.50	
FSN-14	7,816,818	512,991	736.3	173.00	250	-50	9.40	1.05	75.60	76.65	
FSN-15	7,816,863	512,820	741.9	133.95	250	-50	2.90	2.00	77.10	79.10	
FSN-16	7,816,979	512,644	741.9	110.25	250	-50	8.74	2.15	59.35	61.50	
FSN-17	7,816,880	512,793	739.9	132.10	250	-50	Not mineralized				
FSN-18	7,817,195	512,591	718.9	241.90	250	-50	2.40	3.30	167.70	171.00	
							1.13	1.10	114.05	115.15	
FSN-19	7,817,095	512,601	725.66	204.05	250	-50	4.95	1.00	130.45	131.45	
							2.64	1.00	134.40	135.40	
							2.67	2.55	146.80	149.35	
FSN-20	7,817,155	512,596	720.80	204.25	250	-50	5.00	1.00	167.65	168.65	
							1.36	1.60	80.95	82.55	
FSN-21	7,817,213	512,453	706.52	211.80	290	-50	4.23	0.50	126.80	127.30	
							1.56	2.25	148.05	150.30	
FSN-22	7,816,873	512,975	730.16	185.25	250	-50	3.01	3.40	83.40	86.80	
FSN-23	7,816,914	512,931	724.7	222.65	250	-50	2.41	4.85	136.85	141.70	
FSN-24	7,816,914	512,931	724.7	222.65	250	-50	0.68	0.60	70.80	71.40	
FSN-25	7,816,962	512,680	740.2	110.55	250	-50	1.58	3.00	83.15	86.15	
FSN-26	7,816,808	512,885	749.6	53.80	250	-70	3.65	3.00	92.90	95.90	
FSN-27	7,816,797	512,914	749.8	88.75	250	-70	4.31	3.25	85.20	88.45	
FSN-28	7,816,800	513,020	736.4	234.40	250	-70	0.98	2.20	86.40	88.60	
FSN-29	7,816,790	512,951	745.1	157.25	250	-70	3.00	1.25	68.30	69.55	
FSN-30	7,817,394	512,279	728.2	154.80	250	-60	1.16	1.15	134.50	135.65	
FSN-31	7,817,338	512,310	717.6	230.00	250	-60	Not mineralized				
FSN-32	7,816,774	513,021	741.6	174.35	250	-60	Not mineralized				
FSN-33	7,817,446	512,272	722.5	223.40	250	-70	6.85	0.55	89.15	89.70	
							3.40	0.40	92.30	92.70	
FSN-34	7,816,773	513,089	720.1	142.60	250	-70	Not mineralized				
FSN-35	7,816,928	512,725	733.0	101.00	250	-70	Not mineralized				
FSN-36	7,817,039	512,629	734.8	138.65	250	-70	1.36	1.15	100.35	101.50	
FSN-37	7,817,314	512,245	723.1	112.30	250	-70	Not mineralized				
FSN-38	7,817,291	512,265	716.1	106.55	250	-60	Not mineralized				
FSN-39	7,817,073	512,493	725.5	111.90	250	-70	2.92	1.50	42.30	43.80	
FSN-40	7,817,092	512,459	719.7	124.10	250	-70	Not mineralized				
FSN-41	7,817,115	512,435	713.5	122.35	250	-60	1.14	0.65	25.50	26.15	
							1.12	0.75	53.20	53.95	
							2.01	1.10	72.30	73.40	
FSN-42	7,816,905	512,760	733.8	116.25	250	-60	2.69	1.90	67.60	69.50	
							4.46	2.20	39.80	42.00	
FSN-43	7,817,013	512,734	726.3	171.40	250	-60	1.33	1.00	118.20	119.20	
							4.47	3.00	160.90	163.90	
FSN-44	7,817,066	512,707	725.2	205.70	250	-60	Not mineralized				
FSN-45	7,816,802	512,816	755.3	41.40	250	-60	Not mineralized				
FSN-46	7,816,819	512,791	753.2	56.75	250	-70	1.76	5.30	32.70	38.00	
FSN-47	7,816,830	512,766	754.3	44.75	250	-70	3.31	8.00	21.25	29.25	
FSN-48	7,816,841	512,742	755.5	45.20	250	-70	Not mineralized				
FSN-49	7,816,784	512,837	756.9	44.95	250	-70	1.70	5.60	31.00	36.60	
FSN-50	7,816,923	512,692	779.3	46.50	250	-70	Not mineralized				
FSN-51	7,816,768	512,865	757.1	48.60	250	-70	2.70	1.85	42.10	43.95	
FSN-52	7,816,760	512,899	753.9	56.60	250	-70	Not mineralized				
FSN-53	7,817,060	512,508	727.8	47.50	250	-60	12.37	6.35	40.40	46.75	
							11.25	5.70	17.40	23.10	
FSN-54	7,817,224	512,321	697.9	35.15	250	-60	35.70	0.85	27.05	27.90	
							1.13	0.80	20.45	21.25	
FSN-55	7,817,243	512,304	702.5	32.00	250	-60	6.32	5.05	41.60	46.65	
FSN-56	7,817,048	512,528	730.3	46.65	250	-60	Not mineralized				
FSN-57	7,817,264	512,291	708.8	43.20	250	-60	Not mineralized				
FSN-58	7,817,271	512,267	711.8	33.80	250	-60	2.17	1.60	17.30	18.90	
FSN-59	7,817,031	512,541	733.5	47.30	250	-50	4.64	2.05	36.80	38.85	
FSN-60	7,817,015	512,554	736.4	44.10	250	-50	5.10	1.40	31.70	33.10	
FSN-61	7,816,999	512,567	740.2	52.60	250	-50	2.65	0.90	38.05	38.95	
FSN-62	7,816,973	512,577	747.1	64.80	250	-50	5.80	4.10	22.10	26.20	

Turmalina Mine



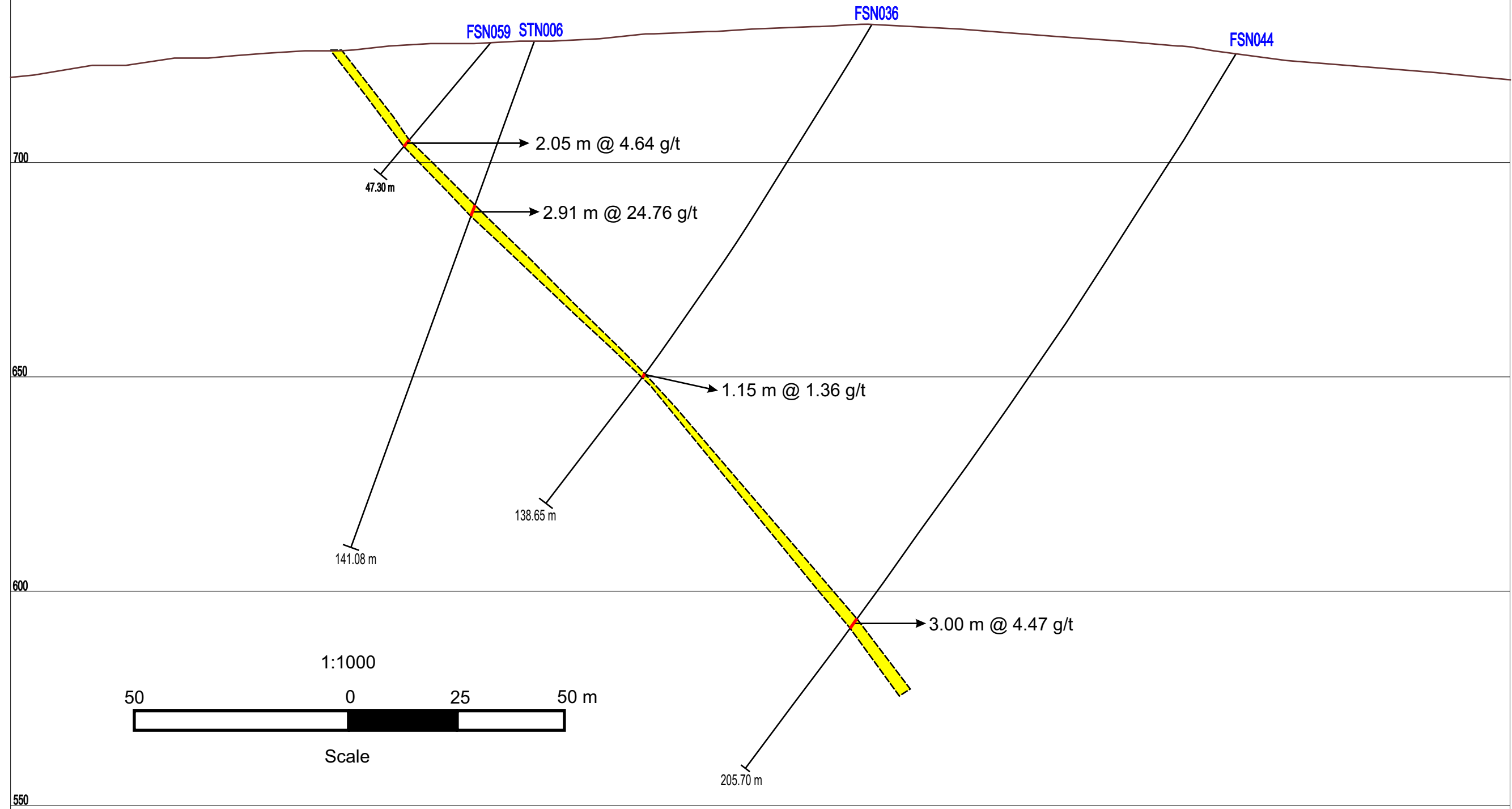


Satinoco Target Phase 1 Exploration Program Vertical Section - SV01

S70W

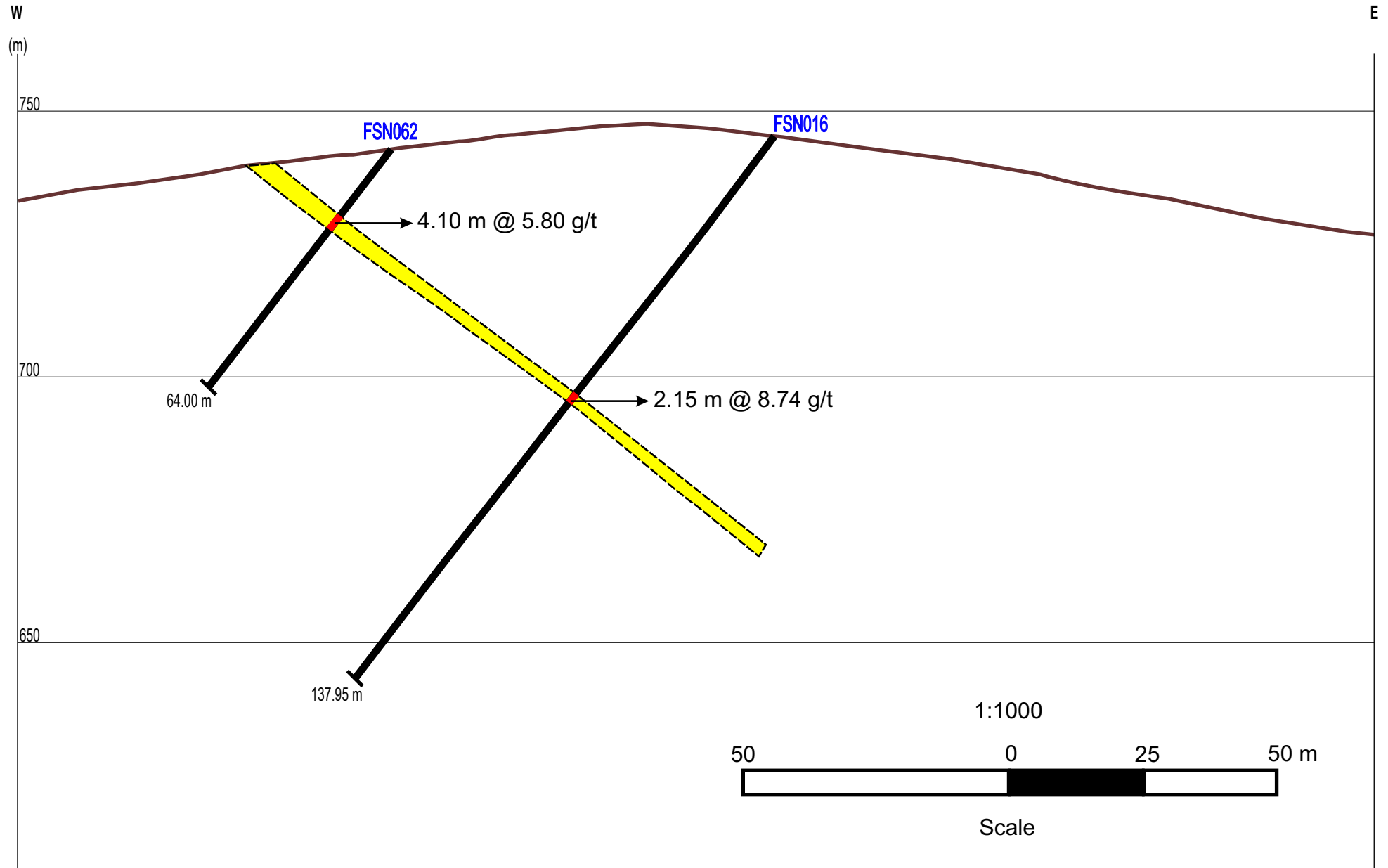
N70E

(m)





Satinoco Target Phase 1 Exploration Program Vertical Section - SV02

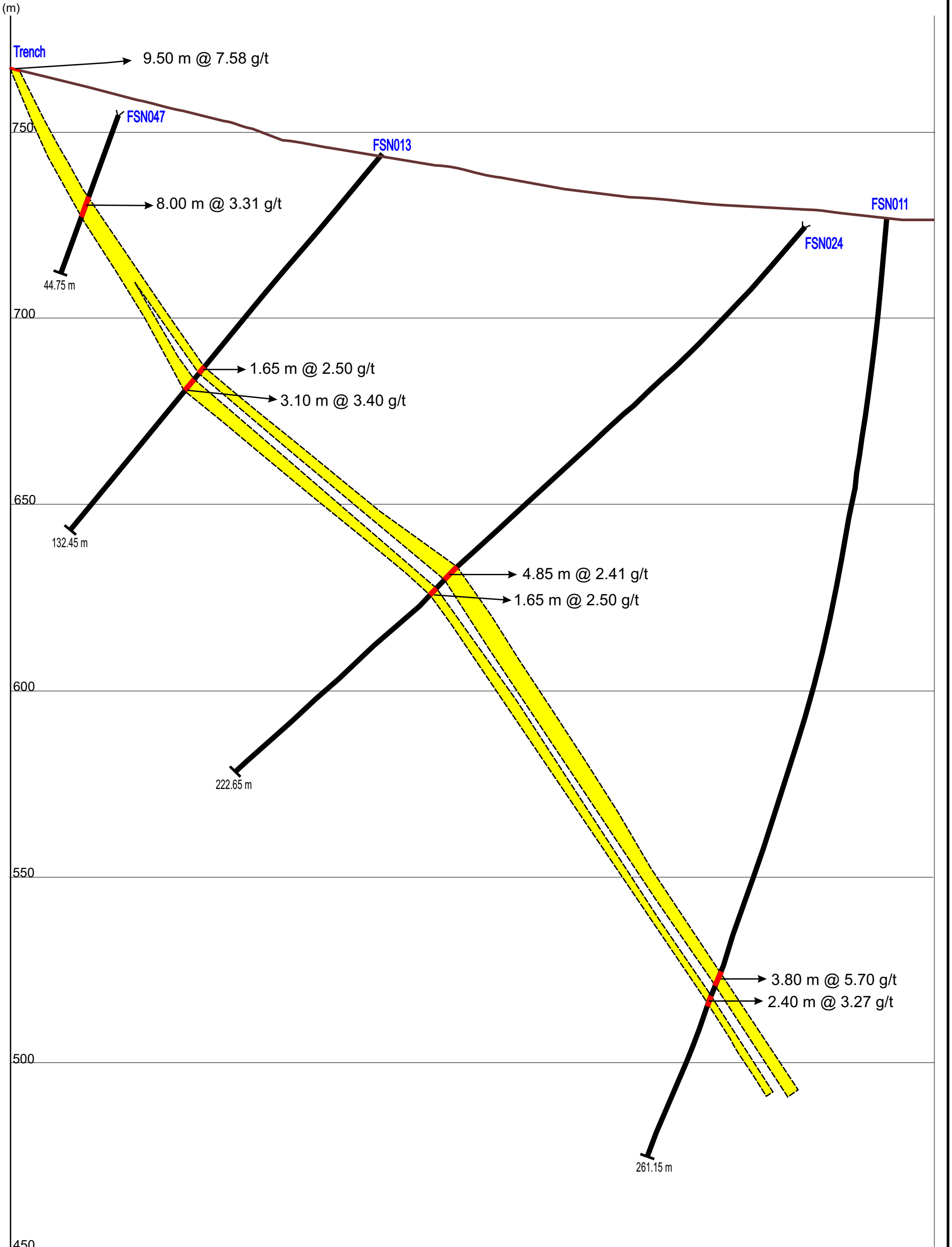




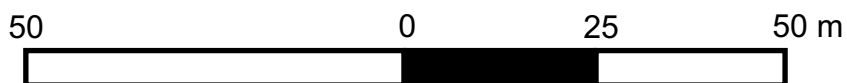
Satinoco Target
Phase 1 Exploration Program
Vertical Section - SV03

S70W

N70E



1:1000



Scale